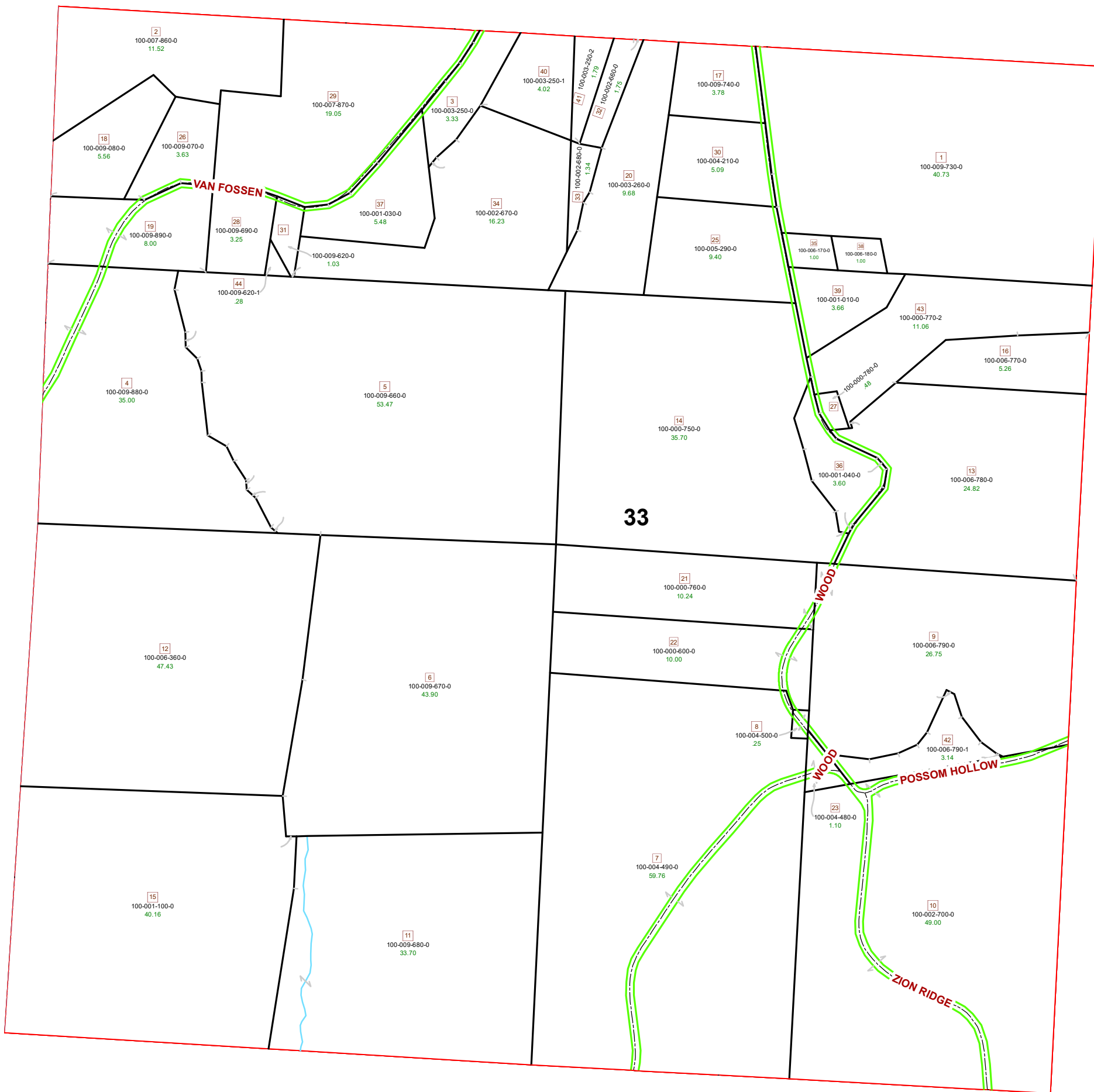
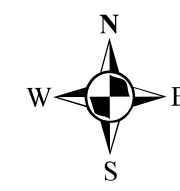


# MARION TOWNSHIP SECTION 33 R12 TWP 8 MORGAN COUNTY, OH



PIN	Owner	VOL	PAGE	LegalDescr	Acres
100-003-250-2	BROOKES ROBERT & JUDITH	OR37	686	R12 T08 S33 SD 41	1.797
100-003-250-1	BROOKES ROBERT & JUDITH	OR37	386	R12 T08 S33 SD 40	4.02
100-003-250-0	BROOKES ROBERT & JUDITH	OR38	320	R12 T08 S33 SD 3	3.333
100-006-790-0	COLE BETH A	OR68	737	R12 T08 S33 SD 9	26.755
100-006-780-0	COLE BETH A	OR68	737	R12 T08 S33 SD 13	24.829
100-006-770-0	COLE BETH A	OR68	737	R12 T08 S33 SD 16	5.269
100-001-030-0	COLE GARY LAWRENCE	D.V 183	695	R12 T08 S33 SD 37	5.48
100-001-100-0	COMSTOCK BRUCE A	OR234	2564	R12 T08 S33 SD 15	40.16
100-009-740-0	DOZER DONALD ANN L SHUSTER & JUDITH L BROOKS	OR81	19	R12 T08 S33 SD 17	3.788
100-003-260-0	DOZER DONALD ANN L SHUSTER & JUDITH L BROOKS	OR81	19	R12 T08 S33 SD 20	13.42
100-004-210-0	DOZER DONALD ANN L SHUSTER JUDITH L BROOKS	OR81	19	R12 T08 S33 SD 30	5.092
100-009-730-0	DOZER DONALD L & LORETTA	OR38	233	R12 T08 S33 SD 1 S	40.73
100-000-760-0	DUTCH RIDGE LAND COMPANY LLC	OR224	1726	R12 T08 S33 SD 21	10.24
100-000-750-0	DUTCH RIDGE LAND COMPANY LLC	OR224	1726	R12 T08 S33 SD 14	35.7
100-006-790-1	FINLEY STEPHANIE S & BRIAN K	OR156	793	R12 T08 S33 SD 42	3.145
100-002-700-0	JEFFERS' TREE FARM LLC	OR172	376	R12 T08 S33 SD 10	49
100-001-040-0	KENNEDY CHARLES P JR	OR116	337	R12 T08 S33 SD 36	3.606
100-004-480-0	LEWIS CARL D & CAROLE R	D.V 134	540	R12 T08 S33 SD 23	1.1
100-004-500-0	LEWIS CARL D & CAROLE R	D.V 166	363	R12 T08 S33 SD 8	0.25
100-004-490-0	LEWIS CARL D & CAROLE R	D.V 134	540	R12 T08 S33 SD 7	59.76
100-001-010-0	MAYLE JAMES L JR & ELIZABETH A	OR38	794	R12 T08 S33 SD 39	3.664
100-000-780-0	MAYLE ROBERT L & CONNIE S	OR165	378	R12 T08 S33 SD 27	0.48
100-000-770-2	MAYLE ROBERT L & CONNIE S	OR165	378	R12 T08 S33 SD 43	11.067
100-005-290-0	MAYLE ROBERT L & GLORIA A	D.V 155	539	R12 T08 S33 SD 25	9.4
100-009-880-0	MCADAMS DAVID W & ZENAIDE T	OR31	156	R12 T08 S33 SD 4 S	35
100-009-890-0	MCADAMS DAVID W & ZENAIDE T	OR31	156	R12 T08 S33 SD 19	8
100-007-870-0	MONTANO JOSEPH H & JANET L	D.V 196	743	R12 T08 S33 SD 29	19.05
100-007-860-0	MONTANO JOSEPH H & JANET L	D.V 196	743	R12 T08 S33 SD 2 S	11.52
100-006-180-0	NEWTON STEPHANIE MICHELLE	OR50	249	R12 T08 S33 SD 38	1
100-006-170-0	NEWTON STEPHANIE MICHELLE	OR50	249	R12 T08 S33 SD 35	1
100-006-360-0	OLNEY ALLEN	D.V 188	299	R12 T08 S33 SD 12	47.43
100-000-600-0	QUALITY BUSINESS INVESTMENTS LLC	OR230	2419	R12 T08 S33 SD 22	10
100-009-620-0	QUATTLEBAUM CODY K	OR209	900	R12 T08 S33 SD 31	1.037
100-009-680-0	ROBERTSON CLIFFORD & PATRICIA	OR6	506	R12 T08 S33 SD 11	33.705
100-009-670-0	ROBERTSON CLIFFORD & PATRICIA	OR6	506	R12 T08 S33 SD 6 S	43.903
100-009-660-0	ROBERTSON CLIFFORD & PATRICIA	OR6	506	R12 T08 S33 SD 5 S	53.479
100-009-690-0	ROBERTSON CLIFFORD & PATRICIA	OR6	506	R12 T08 S33 SD 28	3.25
100-009-620-1	ROBERTSON CLIFFORD H & PATRICIA A	OR197	753	R12 T08 S33 SD 44	0.283
100-009-070-0	THOMAS JAMES A	OR204	811	R12 T08 S33 SD 26	3.633
100-009-080-0	THOMAS JAMES A	OR204	811	R12 T08 S33 SD 18	5.562
100-002-680-0	WOGAN HILEY J JR	OR116	82	R12 T08 S33 SD 33	1.34
100-002-670-0	WOGAN HILEY J JR	OR116	82	R12 T08 S33 SD 34	16.23
100-002-660-0	WOGAN HILEY J JR	OR116	82	R12 T08 S33 SD 32	1.75



Boundaries	
----- Hidden	----- ROW
----- Hydro	----- Section
----- Roads	----- Lot
----- County	----- Parcel
----- Township	----- Parcels



Disclaimer: The information that these maps contains is for reference purposes only. Please bring any erros to the attention of the Engineer's Office staff.  
Thank you

Source: Morgan County Engineer's Office  
Author: Marcia Wolfe  
Date: 7/16/2020

